



# 2015

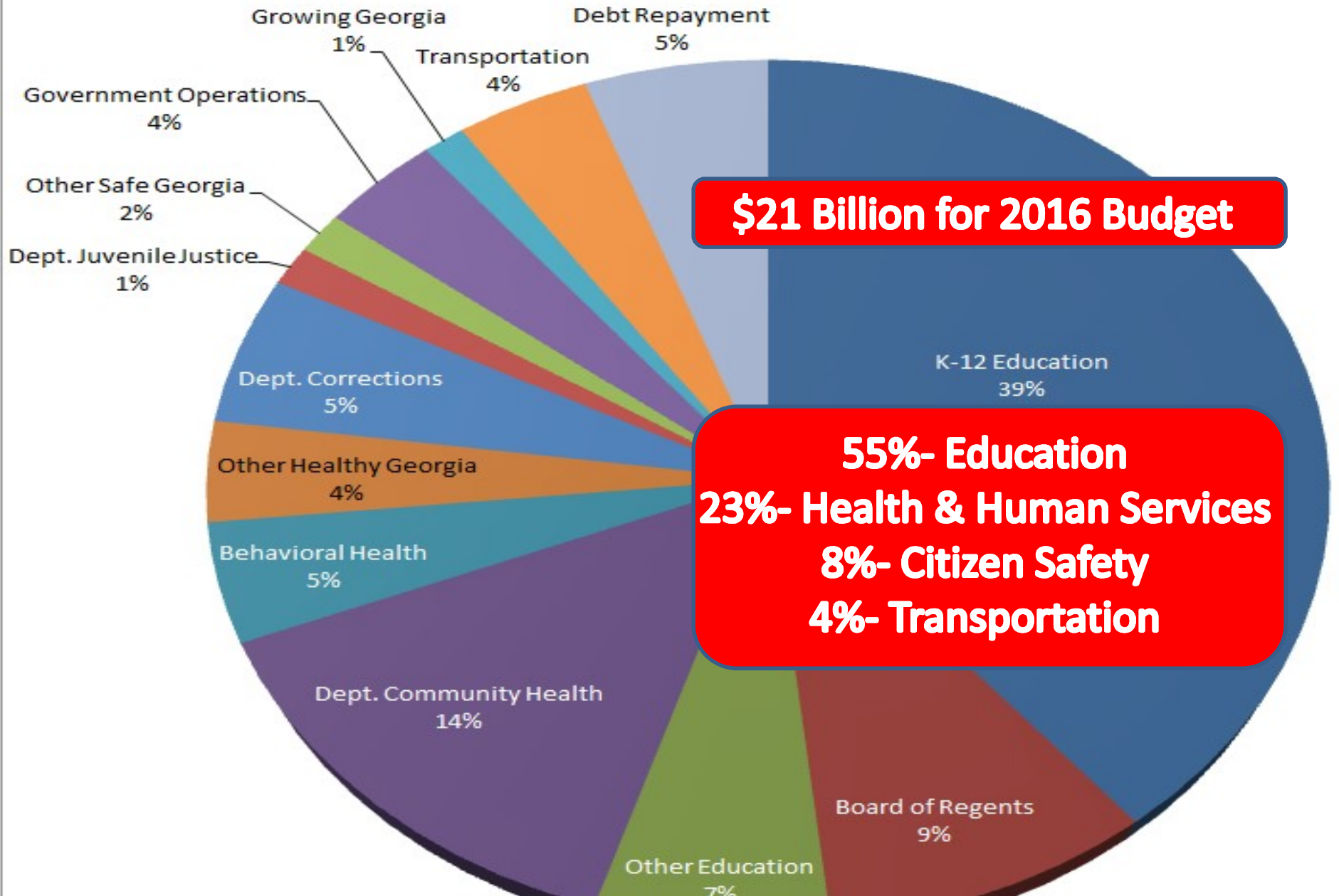
ISSUE OVERVIEW



# 2016 BUDGET

WHERE DOES THE MONEY GO?

# FY 2016 Georgia Expenditures



# EDUCATION ISSUES

**What was Accomplished?**



**MORE DIPLOMAS!**



**HOUSE BILL 91 - GRADUATION TEST**

# HIGH SCHOOL CREDITS FOR COLLEGE CLASSES



**MOVE WHEN READY**

# OPPORTUNITY SCHOOL DISTRICTS



**SIGNED BY GOVERNOR DEAL**

*RESULT..*

*Pass*



*Fail*



WHAT?

SCHOOLS THAT SCORE 60 OR BELOW FOR 3 YEARS CONSECUTIVELY



# WHAT NEXT?



**YOU DECIDE!**



2015

"THE YEAR OF THE CHILD"



# HALIEGH'S HOPE

MEDICAL CANNIBIS OIL

# WHAT?



**Raleigh's Hope**

Max CBD	21.49 mg/ml
Max THC	0.81 mg/ml
CBD:THC Ratio	26:1
Batch Number	CC0123090

**OIL CONTAINS LOW THC LEVELS**

**WHY?**

**SEIZURES**

**SEIZURE DISORDERS / CERTAIN MEDICAL CONDITIONS**



# FUTURE?

STUDY COMMITTEE / FEDERAL REGULATION

A young girl with light brown hair pulled back, smiling warmly at the camera. She is wearing a bright orange t-shirt under a blue denim vest that has silver studs on the shoulders. She is also wearing large, light-colored hoop earrings. The background is a dark, reflective surface, possibly a window or a mirror, showing some blurred reflections of people and objects.

# AVA'S LAW

MANDATES INSURANCE COVERAGE FOR CHILDREN WITH AUTISM

# NEW AUTISM INSURANCE REFORM BILL

## GEORGIA

- ▶ Assessments, evaluations or tests by a licensed physician
- ▶ Applied behavior analysis up to \$35,000 per year
- ▶ Counseling and therapy services
- ▶ Coverage through age 6

WHAT?

4  
11:53

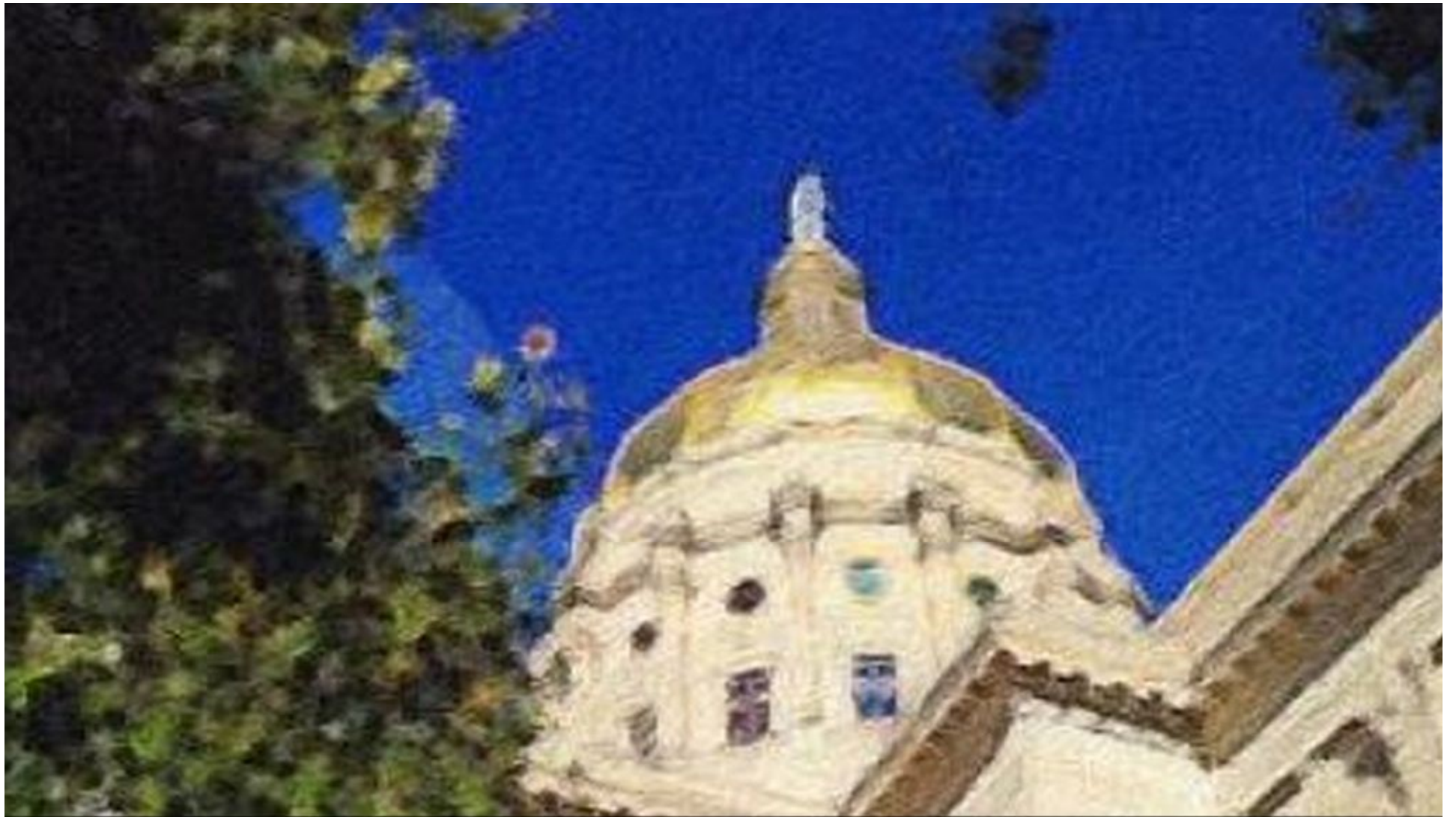




# TRANSPORTATION

FUNDING ACT OF 2015





# THE GENERAL ASSEMBLY ADOPTS HOUSE BILL 170

# WHY?



**POPULATION GROWTH. 49TH IN SPENDING. ECONOMIC DEVELOPMENT.**

An aerial photograph of a complex multi-level highway interchange with several overpasses and ramps. The roads are filled with cars and trucks. The surrounding area includes green grass, trees, and some industrial or commercial buildings in the distance.

# IMPACT

WHAT IS HOUSE BILL 170?

# CONSOLIDATES GAS TAX



26 CENTS PER GALLON / 29 CENTS PER GALLON ON DIESEL FUEL



# HOTEL FEE

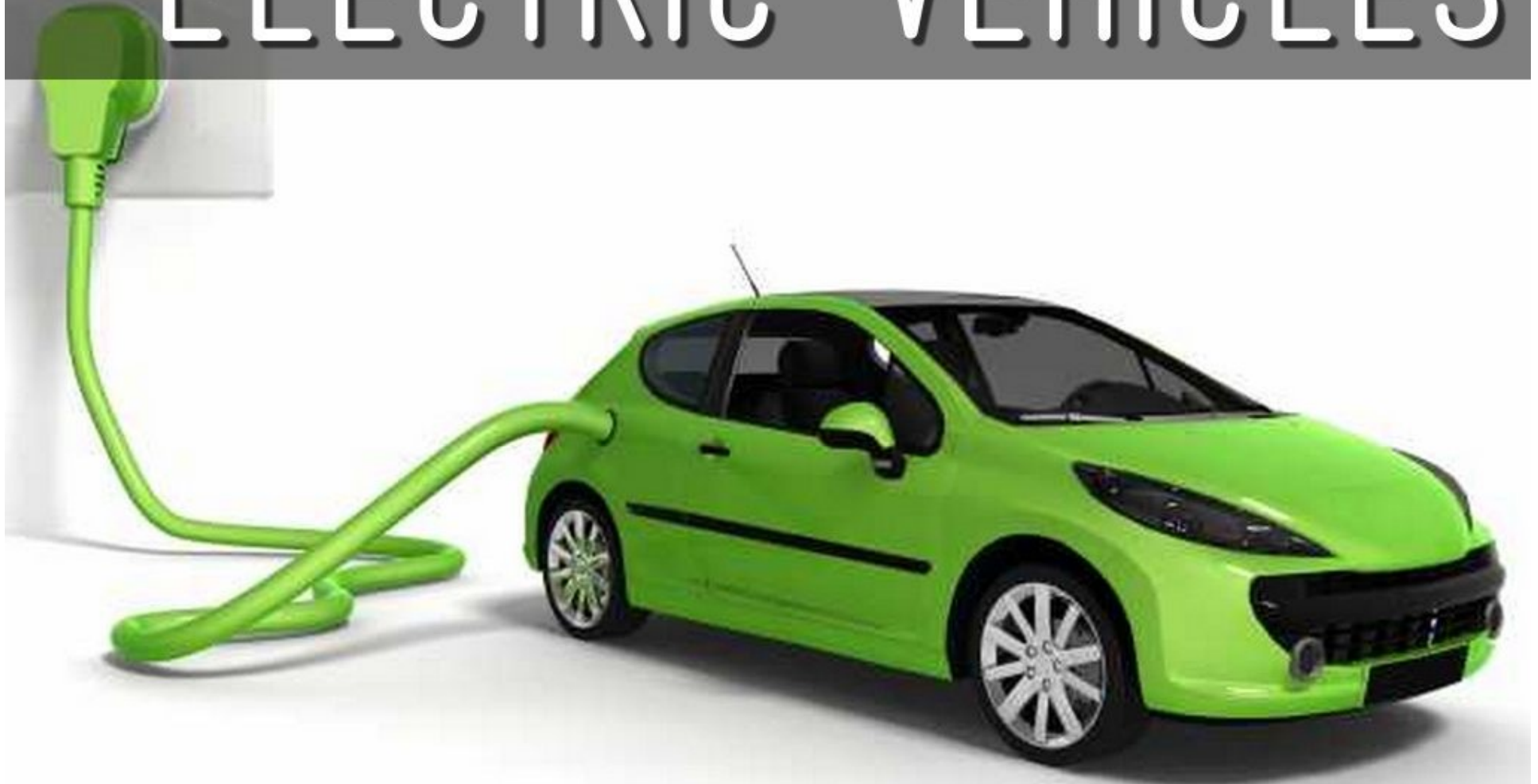
IMPOSES 5 DOLLAR DAILY FEE IN HOTELS / MOTELS ACROSS THE STATE

# REMOVES



AIRLINE TAX FUEL CREDIT

# ELECTRIC VEHICLES



ADDS FEES / REMOVES CREDITS



**REMOVES STATE SALES TAX ON GAS**

**LEAVES LOCAL GAS TAXES INTACT**

A blue semi-truck with a white trailer is shown in motion, blurred background. The truck is the central focus of the image.

# IMPOSES

HIGHWAY IMPACT FEE FOR LARGE TRUCKS



**NO**

**WAS MY VOTE ON HOUSE BILL 170**

# BILL SIGNED

A group of men in suits are gathered around a table. One man in the foreground is seated and signing a document. Several other men stand behind him, some looking on. An American flag is visible in the background. The scene appears to be a formal signing ceremony.

EXPECTED TO RAISE NEARLY A BILLION DOLLARS IN REVENUE